

## OVERVIEW

## FEATURES

- BENEFITS
- TECHNICAL SPECIFICATIONS

## INOX-PSS & DSS SILVER SATIN

- CEILINGS
- FLOORS
- OPERATING PANELS
- HANDRAILS
- DOOR

## EASE CABIN

- CEILINGS
- FLOORS
- OPERATING PANELS
- HANDRAILS
- DOOR
- HONEYCOMB SHADE OPTIONS

## RANGE OF APPLICATION

- FOCUS S MRL

# LET'S ONE

THE ONE IS A VALUE-FOR-MONEY ELEVATOR SOLUTION, PROVIDING TWO OPTIONS OF BASIC AND FUNCTIONAL LIFT CABINS WITH A TRACTION MRL MECHANICAL SETTING.

THE ONE FOR YOU MEANS:



COMPETITIVE PRICES



SHORT DELIVERY TIMES



EASY INSTALLATION

FOR LOW & MEDIUM-RISE BUILDINGS,  
WITH A STANDARD SPEED 1.0M/S AND MAX NO OF STOPS 12.

YOU'VE GOT NEEDS, YOU NEED ONE.

## FEATURES



PERSONS  
UP TO 13



LOAD  
450 & 630 & 1000KG



MAX TRAVEL  
30M

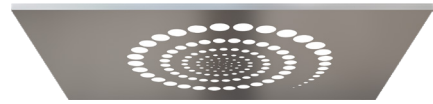


STANDARD SPEED  
1 M/S

## TECHNICAL SPECIFICATIONS

MACHINE ROOMLESS	YES
MOTOR TYPE	PM GEARLESS
CONTROL SYSTEM	VVVF
REMOTE LIFT MONITORING	OPTIONAL
CONFORMITY WITH	EN81-20/50

## CEILING



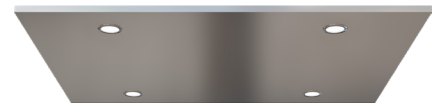
FC6



FC5



FC26



FC11

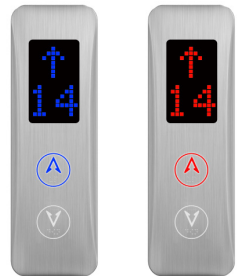


ECO LED

## OPERATING PANELS



SLIM LINE COP



SLIM LINE LOP

## HANDRAILS



HR 2  $\varnothing 28MM$

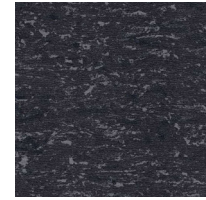


HR 3  $\varnothing 28MM$



HR 4  $\varnothing 38mm$

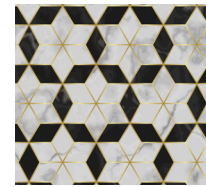
## FLOORS



O360 BALATON  
MIPOLAM



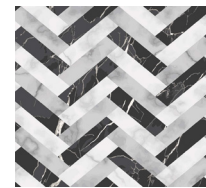
MIPOLAM FORTIS  
SAND 1138



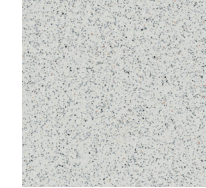
MTF 9



MTF 2



MTF 13



PF 3



MTF 4

## DOOR

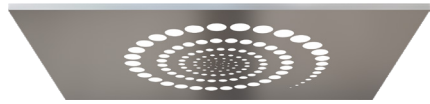


## INOX-PSS & DSS SILVER SATIN

THE FUNCTIONAL



## CEILING



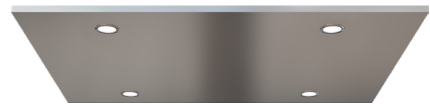
FC6



FC5



FC26



FC11

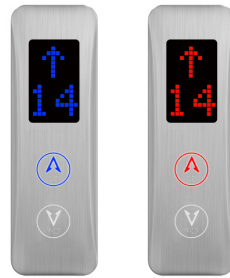


ECO LED

## OPERATING PANELS



SLIM LINE COP



SLIM LINE LOP

## HANDRAILS



HR 2  $\Phi 28mm$

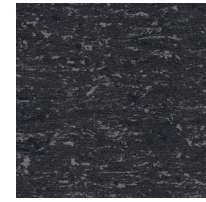


HR 3  $\Phi 28mm$



HR 4  $\Phi 38mm$

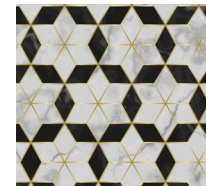
## FLOORS



O360 BALATON  
MIPOLAM



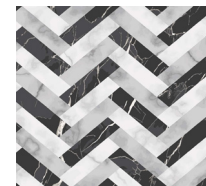
MIPOLAM FORTIS  
SAND 1138



MTF 9



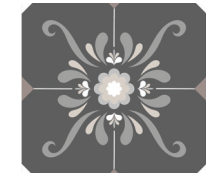
MTF 2



MTF 13



PF 3



MTF 4

## DOOR

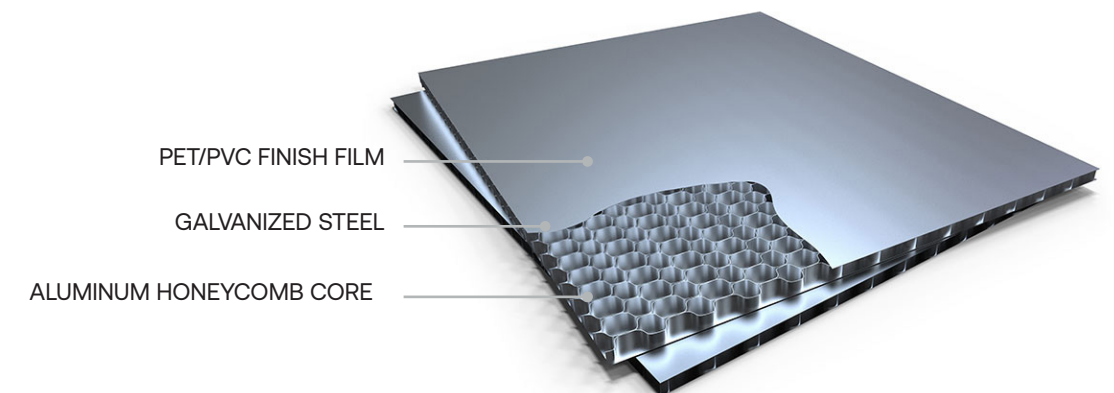


## EASE CABIN

THE DOUBLE SIDED



SIDEWALLS MADE OF HONEYCOMB PANELS



PET/PVC FINISH FILM

GALVANIZED STEEL

ALUMINUM HONEYCOMB CORE

### HONEYCOMB SHADE OPTIONS

THE EASE DOUBLE-SIDED HONEYCOMB PANELS CONSIST OF THE SAME FINISH/COLOR.

IN CASE OF EXTENSIVE USAGE OR VANDALISM, THE WORN BOARDS CAN BE OVERTURNED FROM THE INSIDE OF THE CABIN.



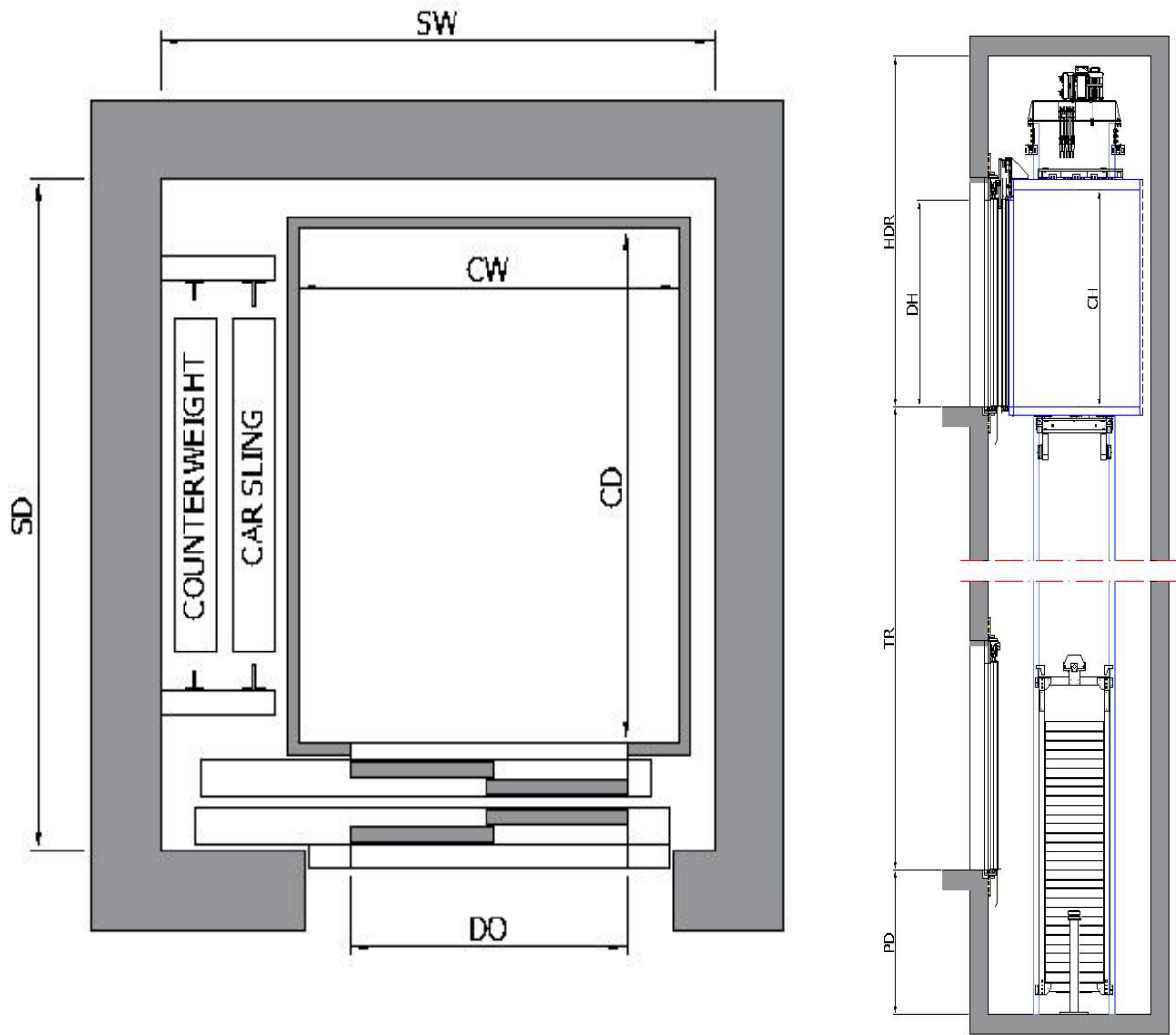
### PERIPHERALS SHADE OPTIONS

THE EASE CABIN COMES WITH CORNERS AND COLUMNS MADE EITHER STAINLESS STEEL OR PAINTED IN PRESELECTED RAL COLOR SHADES FOR A BETTER AESTHETIC RESULT.



# FOCUS S MRL

MAX TRAVEL: 30M | MAX STOPS: 12 | MIN HEADROOM: 3350MM | MIN PIT: 1000MM



## RANGE OF APPLICATION

IN CASE THE DISTANCE BETWEEN CABIN AND SHAFT WALL IS BIGGER THAN 500MM THE BALUSTRADE HEIGHT IS 1100MM WHICH LEADS TO A HEADROOM REQUIREMENT OF 3750MM.

\* FOR EASE CABIN +30MM

CAPACITY	MAX. SPEED	CW	CD	CH	SW*	SD*	DO	DH
(KG)	M/S	(MM)	(MM)	(MM)	(MM)	(MM)	(MM)	(MM)
450	1,00	1000	1300	2100	1500	1700	800	2000
630	1,00	1100	1400	2100	1600	1800	900	2000
1000	1,00	1100	2100	2100	1650	2500	900	2000

HEADQUARTERS & FACTORY

POLYKASTRO  
INDUSTRIAL PARK  
61200 GREECE

+30 23430 54000 (T)  
INFO@DOPPLER.GR (E)

ATHENS BRANCH

12 LASSANI ST.  
12132 PERISTERI  
ATHENS GREECE

+30 210 341 6210 (T)  
INFOATH@DOPPLER.GR (E)

WWW.DOPPLER.GR (W)

THESSALONIKI OFFICE & SHOWROOM

5 GIALOPSOU EKTOROS ST.  
56224 EVOSMOS  
THESSALONIKI GREECE

+30 23160 10605 (T)